

# Thank you



App  
Controlled Plug



Sync  
AirComfort



Sync  
SoilQuality

## Getting Started

1



Plug ibebot Hub to your socket.

2



Launch App.

3



Log-in to App using your ibebot Dashboard+ account.

A



No Dashboard+ account yet? access this link to create one:

[connect.ibebot.com/register](https://connect.ibebot.com/register)

4



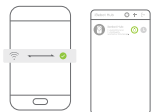
To enter pairing mode, press and hold button until it turns blue.

5



Scan and select  
ibebot Hub from  
App's device list.

6



Enter your  
2.4Ghz Wi-Fi  
credentials.

Voila! You can  
now enjoy using  
ibebot Hub.

## Download APP



Download App by scanning QR  
code, or access below link



[www.ibebot.com/hub-apps.php](http://www.ibebot.com/hub-apps.php)

## More Questions? FAQ



Scan QR Code for FAQ's  
or access below link

[www.ibebot.com/faq-menu](http://www.ibebot.com/faq-menu)

## Content



ibebot Hub



User Manual

## Specifications

Input & Output voltages:	90V-240VAC
Max load current:	16A
Max load:	3520W
Compatibility:	All ibebot products
Sync:	Auto-sync ibebot devices to Dashboard+ & Apps
Dimensions :	110mm x 62mm x 72mm
Net weight:	Approx. 145g

## Safety Instructions

Manufacturer does not assume liability for resulting damages to property or personal injury, if the unit has been misused and or damaged by improper use or failure to observe operating.

Instructions:

- The unit should be kept out of reach of children.
- Do not subject the unit to excessive force, shock, dust.
- Do not subject the unit to extreme temperatures.
- Do not immerse unit in water.
- Do not tamper with unit's internal components.
- Do not clean unit with abrasive or corrosive materials.
- Safe operation is no longer possible if device: No longer works / Shows visible damages / Is stored under unfavourable conditions for long periods of time / Is subject to considerable transport stress.

## Cautions

Risk of explosion if battery is replaced by an incorrect type. Dispose of used batteries according to instructions or local regulations.

To reduce the risk of interference with other electrical equipment: Consult your doctor or device manufacturer if you have a pacemaker or other implanted electrical device.

## Trademark

iBebot™ is registered in EU, Hong Kong and other countries.

## Declaration of Conformity

iBebot Limited, declares that the provided sensor is in compliance with the requirements of Directive 2014/53/EU. FCC Caution: This device complies with part 15 of the FCC Rules.



A copy of the signed and dated Declaration of Conformity is available upon request.

## Environmental Friendly Disposal

Old electrical appliances must not be disposed of together with residual waste, but have to be disposed of separately. The disposal at the communal collecting point via private persons is for free. The owner of old appliances is responsible to bring the appliances to these collecting points or to similar collection points. With this little personal effort, you contribute to recycle valuable raw materials and the treatment of toxic substances.

Contents of this manual are not to be reproduced without permission of the manufacturer.



Also Available

## AirComfort

Temperature & Humidity Reporting



Humidity



Temperature



Wireless  
Sync

## SoilQuality

Soil moisture & Nutrient Sensor



Soil  
Moisture



EC



Wireless  
Sync

## Dashboard+

Desktop and Tablet



Charts



VPD



Mold Risk

[www.ibebot.com](http://www.ibebot.com)